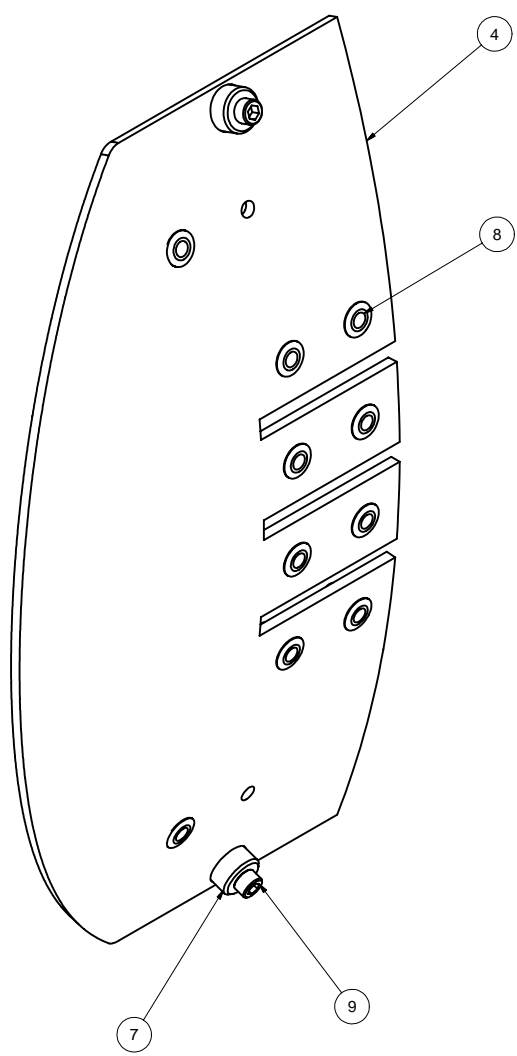
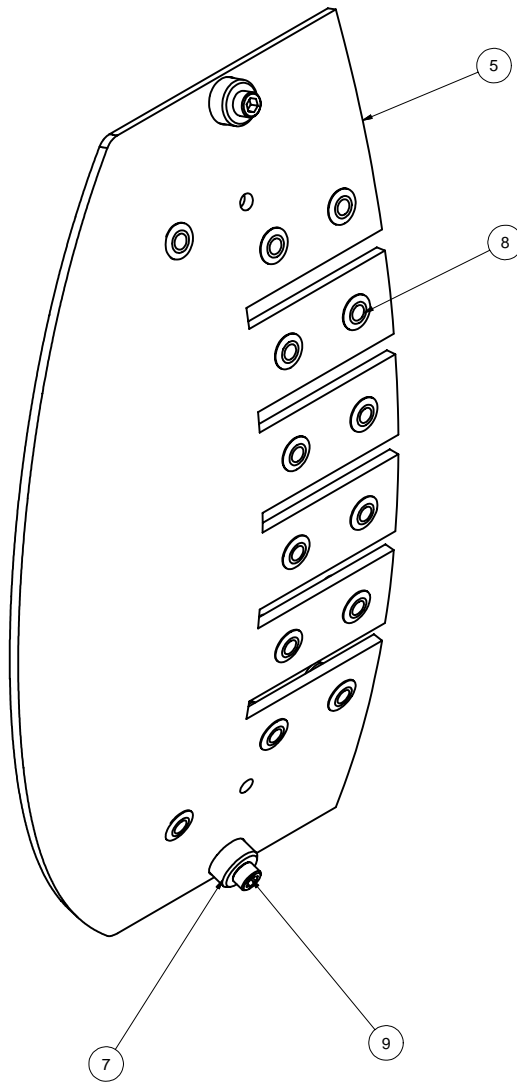


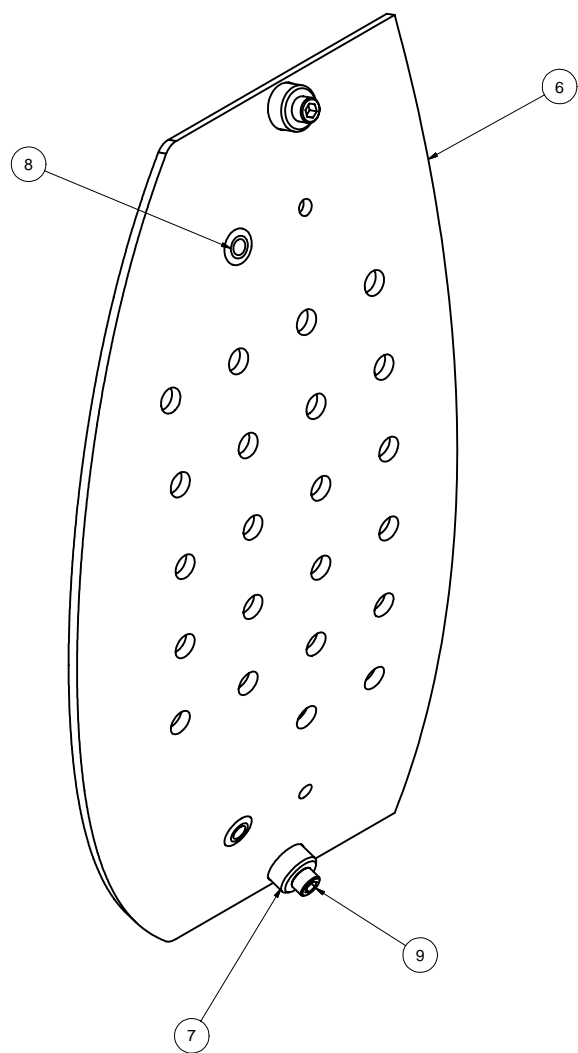
REVISIONS				
SYM.	ZONE	DESCRIPTION	DATE	APP.



1 SUBASM:TUNER COVER LEFT MOTOR PIEZO WIRES
FILE NAME: 7110-035
SHEET NO.: 1
DFT. SCALE: 1:1
MATERIAL: NOTED
QTY: 1 PER ASSEMBLY
NOTES:



2 SUBASM: TUNER COVER LEFT SENSOR WIRES
FILE NAME: 7110-035
SHEET NO.: 1
DFT. SCALE: 1:1
MATERIAL: NOTED
QTY: 1 PER ASSEMBLY
NOTES:



3 SUBASM: TUNER COVER SEMI-RIGID
FILE NAME: 7110-035
SHEET NO.: 1
DFT. SCALE: 1:1
MATERIAL: NOTED
QTY: 1 PER ASSEMBLY
NOTES:

9		8-32 x 9/16 PANEL SCREW	2	2	2	PURCHASE	
8		8-32 RIVET NUT	10	14	2	PURCHASE	
7		TUNER COVER BOSS	2	2	2	PURCHASE	
6	SHEET 4	TUNER COVER SEMI-RIGID			1		
5	SHEET 3	TUNER COVER LEFT SENSOR WIRES		1			
4	SHEET 2	TUNER COVER LEFT MOTOR PIEZO WIRES	1				
3		SUBASM: TUNER COVER SEMI-RIGID			X		
2		SUBASM: TUNER COVER LEFT SENSOR WIRES		X			
1		SUBASM: TUNER COVER LEFT MOTOR PIEZO WIRES	X				

ITEM	DWG. NO.	DESCRIPTION	G1	G2	G3	REMARKS	REV.
			QUANTITY				

FOR MACHINING LUBRICANT USE ONLY
ALKALINE DETERGENT LUBRICANT CIMSTAR 40
OR EQUIVALENT APPROVED BY CORNELL LEPP

TECHNICAL RESOURCE APPROVALS REQUIRED BEFORE FABRICATION			
	OK	DATE	N/A
DRAFTING (O'Connell):			
MACHINE SHOP (Kaminski):			
CHEMISTRY (Conklin):			
ELECTRONICS SHOP (Barley):			
FURNACE BRAZING (Sherwood):			
BEAM WELDING (Sears):			
WELDING OTHER (Gallagher):			
UTILITIES INTEGRATION (Gallagher):			
STOCKROOMS (Lockwood):			

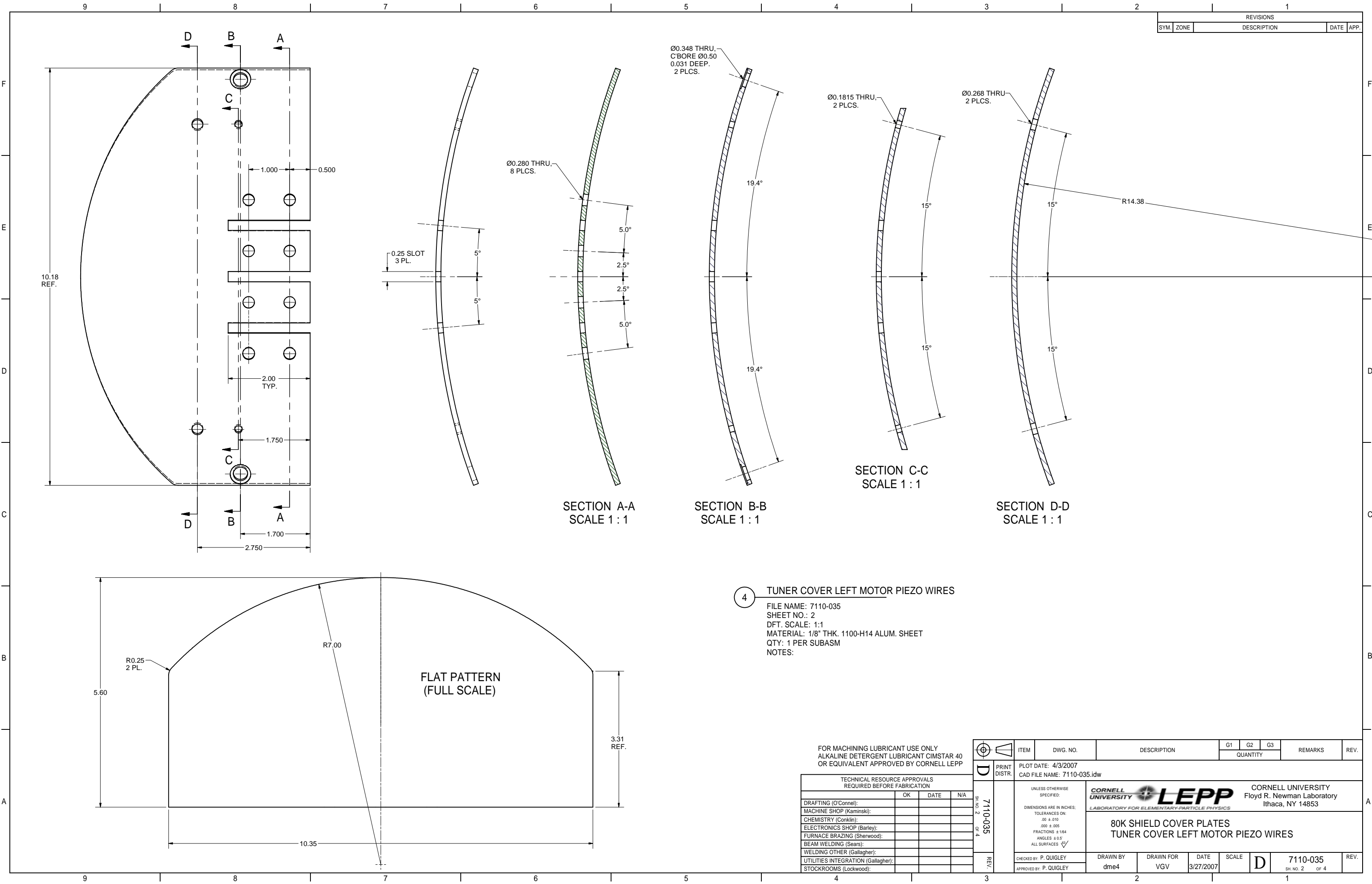
UNLESS OTHERWISE SPECIFIED:
DIMENSIONS ARE IN INCHES:
TOLERANCES ON:
.00 ± .010
.000 ± .005
FRACTIONS ± 1/64
ANGLES ± 0.5°
ALL SURFACES

CORNELL UNIVERSITY
LEPP
LABORATORY FOR ELEMENTARY-PARTICLE PHYSICS

CORNELL UNIVERSITY
Floyd R. Newman Laboratory
Ithaca, NY 14853

**80K SHIELD COVER PLATES
SUB-ASSEMBLIES**

CHECKED BY: P. QUIGLEY	DRAWN BY: dne4	DRAWN FOR: VGV	DATE: 3/27/2007	SCALE: D	7110-035 SH. NO. 1 OF 4	REV.
APPROVED BY: P. QUIGLEY						

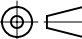







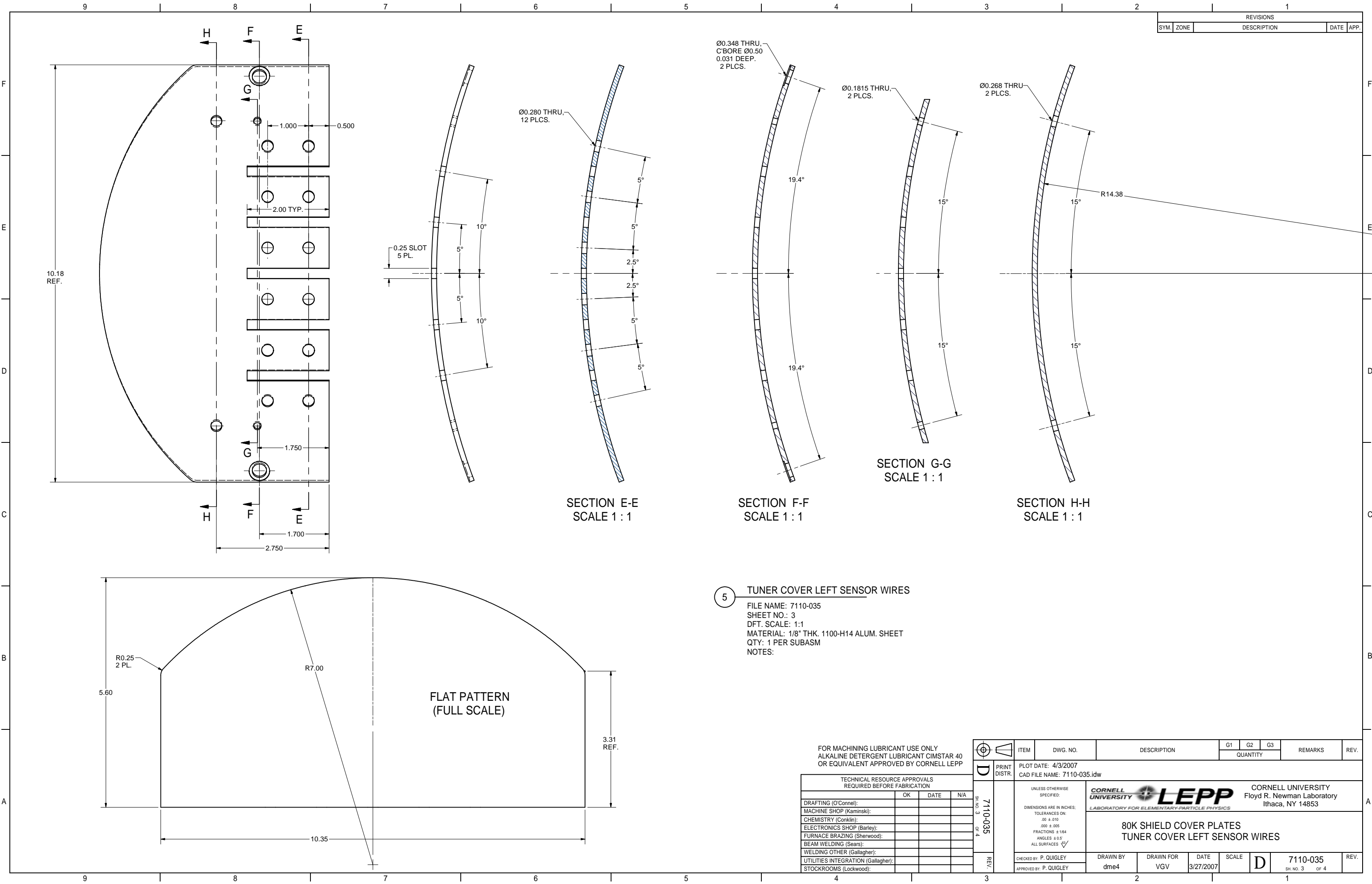
4 TUNER COVER LEFT MOTOR PIEZO WIRES

FILE NAME: 7110-035
SHEET NO.: 2
DFT. SCALE: 1:1
MATERIAL: 1/8" THK. 1100-H14 ALUM. SHEET
QTY: 1 PER SUBASM
NOTES:

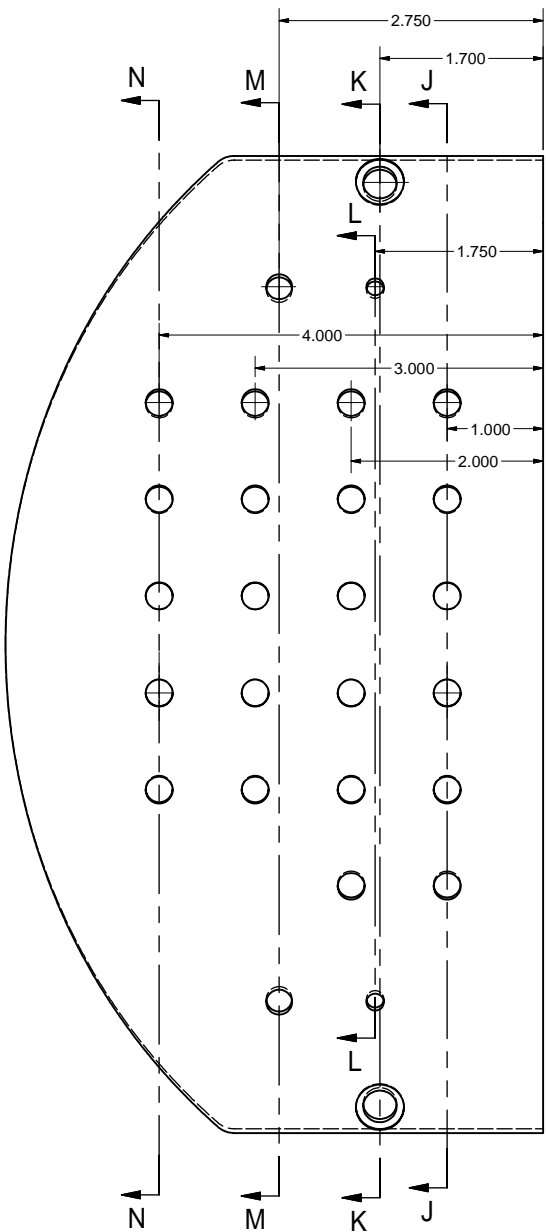
FOR MACHINING LUBRICANT USE ONLY
ALKALINE DETERGENT LUBRICANT CIMSTAR 40
OR EQUIVALENT APPROVED BY CORNELL LEPP

TECHNICAL RESOURCE APPROVALS REQUIRED BEFORE FABRICATION			
	OK	DATE	N/A
DRAFTING (O'Connell):			
MACHINE SHOP (Kaminski):			
CHEMISTRY (Conklin):			
ELECTRONICS SHOP (Barley):			
FURNACE BRAZING (Sherwood):			
BEAM WELDING (Sears):			
WELDING OTHER (Gallagher):			
UTILITIES INTEGRATION (Gallagher):			
STOCKROOMS (Lockwood):			

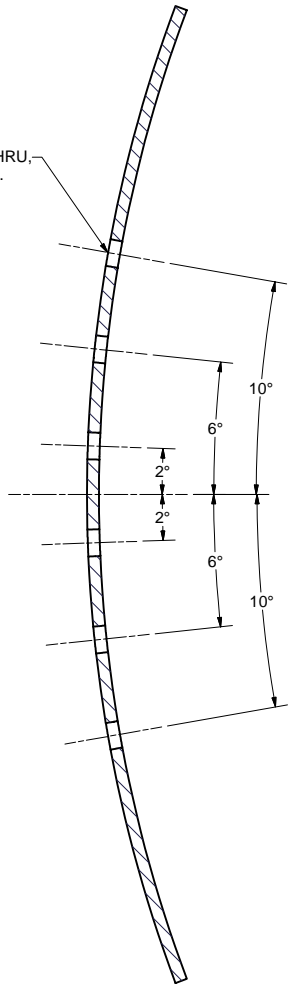
	ITEM	DWG. NO.	DESCRIPTION			G1	G2	G3	REMARKS	REV.
							QUANTITY			
	PRINT DISTR.	PLOT DATE: 4/3/2007 CAD FILE NAME: 7110-035.idw								
	<div><div><div>UNLESS OTHERWISE SPECIFIED:</div><div>DIMENSIONS ARE IN INCHES:</div><div>TOLERANCES ON:</div><div>.00 ± .010</div><div>.000 ± .005</div><div>FRACTIONS ± 1/64</div><div>ANGLES ± 0.5°</div><div>ALL SURFACES </div></div><div><div> </div><div>CORNELL UNIVERSITY Floyd R. Newman Laboratory Ithaca, NY 14853</div><div>LABORATORY FOR ELEMENTARY-PARTICLE PHYSICS</div></div><div>80K SHIELD COVER PLATES TUNER COVER LEFT MOTOR PIEZO WIRES</div></div>									
7110-035 SH. NO. 2 OF 4	REV.	CHECKED BY: P. QUIGLEY	DRAWN BY dme4	DRAWN FOR VGV	DATE 3/27/2007	SCALE		7110-035	SH. NO. 2 OF 4	REV.
	APPROVED BY: P. QUIGLEY									



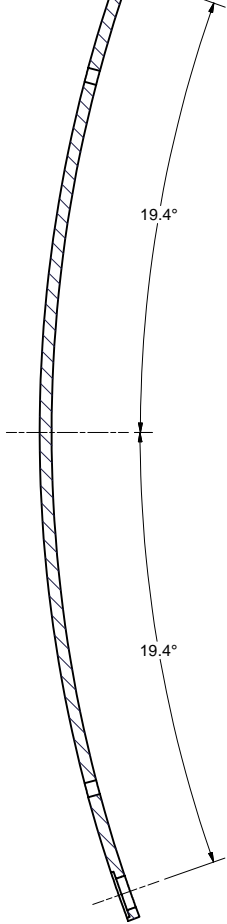
REVISIONS			
SYM.	ZONE	DESCRIPTION	DATE APP.



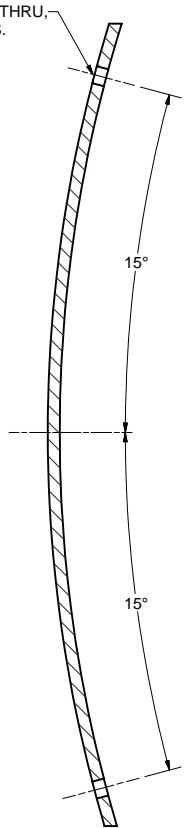
Ø0.280 THRU,
12 PLCS.



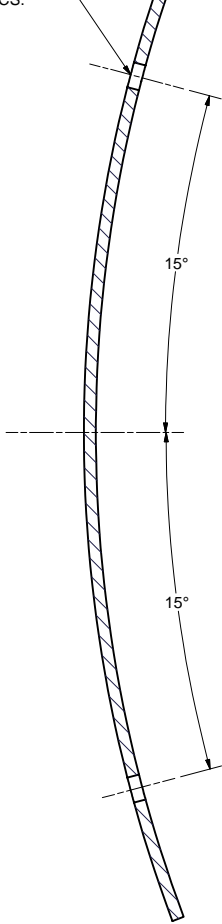
Ø0.348 THRU,
C'BORE Ø0.50
0.031 DEEP.
2 PLCS.



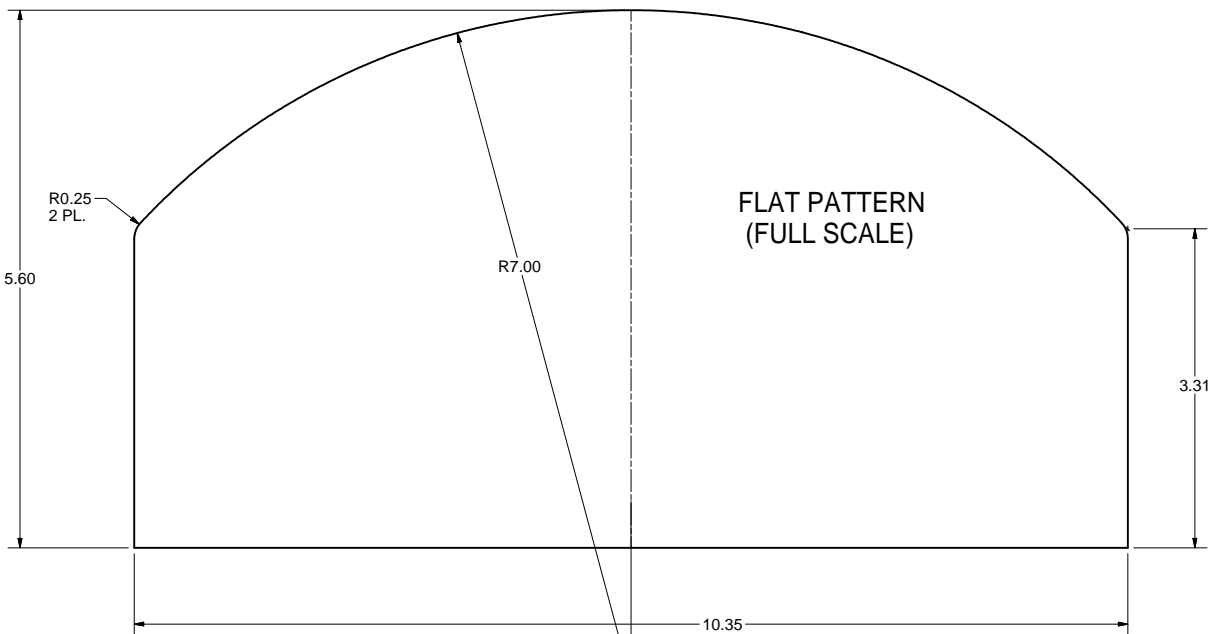
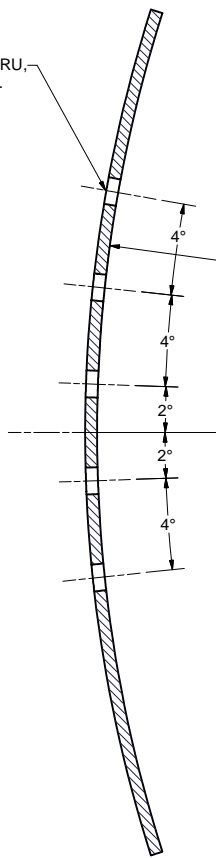
Ø0.1815 THRU,
2 PLCS.



Ø0.268 THRU,
2 PLCS.



Ø0.280 THRU,
10 PLCS.



6 TUNER COVER SEMI-RIGID

FILE NAME: 7110-035
SHEET NO.: 4
DFT. SCALE: 1:1
MATERIAL: 1/8" THK. 1100-H14 ALUM. SHEET.
QTY: 1 PER SUBASM
NOTES:

FOR MACHINING LUBRICANT USE ONLY
ALKALINE DETERGENT LUBRICANT CIMSTAR 40
OR EQUIVALENT APPROVED BY CORNELL LEPP

TECHNICAL RESOURCE APPROVALS REQUIRED BEFORE FABRICATION			
	OK	DATE	N/A
DRAFTING (O'Connell):			
MACHINE SHOP (Kaminski):			
CHEMISTRY (Conklin):			
ELECTRONICS SHOP (Barley):			
FURNACE BRAZING (Sherwood):			
BEAM WELDING (Sears):			
WELDING OTHER (Gallagher):			
UTILITIES INTEGRATION (Gallagher):			
STOCKROOMS (Lockwood):			

		ITEM	DWG. NO.	DESCRIPTION			G1	G2	G3	REMARKS		REV.	
								QUANTITY					
D	PRINT DISTR.	PLOT DATE: 4/3/2007 CAD FILE NAME: 7110-035.idw											
SH. NO. 4 OF 4	7110-035	UNLESS OTHERWISE SPECIFIED: DIMENSIONS ARE IN INCHES: TOLERANCES ON: .00 ± .010 .000 ± .005 FRACTIONS ± 1/64 ANGLES ± 0.5° ALL SURFACES		<div>CORNELL UNIVERSITY FLOYD R. NEWMAN LABORATORY ITHACA, NY 14853</div> <div> LABORATORY FOR ELEMENTARY-PARTICLE PHYSICS</div> <div>80K SHIELD COVER PLATES TUNER COVER SEMI-RIGID</div>									
		CHECKED BY: P. QUIGLEY		DRAWN BY		DRAWN FOR		DATE		SCALE		D	7110-035 SH. NO. 4 OF 4
		APPROVED BY: P. QUIGLEY		dme4		VGV		3/27/2007					
REV.													